



The Wide Angle News

A Publication of the Ann Arbor Camera Club

April 2007

Matthaei Botanical Gardens



Matthaei Conservatory, © ANN O'HAGAN

THE WIDE ANGLE NEWS is published monthly (September through June) by the Ann Arbor Camera Club, P.O. Box 1182, Ann Arbor, Michigan, 48106.

All submissions should be addressed to the editor, Arlene Paup, at -668-1004 e-mail at leepaup@ameritech.net

Yearly membership dues are \$15 (or become a lifetime member for \$100) and may be given to the treasurer, Ed Riske, at the meetings, or you may send a check made out to the "Ann Arbor Camera Club" to the address listed above.

For updates on future meetings please visit our web site at:

www.annarbormcameraclub.org

Thanks to Rich Lawton for editorial help with this issue

Wide Angle News Sponsors:

The Ann Arbor Camera Club is grateful for the long term commitment that both **Big George's** and **Pictures Plus** have made towards covering the expenses of printing and mailing the newsletters. Please keep their generosity in mind (and ask for your discounts!) when shopping for photographic supplies or when you need picture framing done.

PICTURES PLUS

Specializing in conservation glass and archival matting.

**WESTGATE SHOPPING CENTER
Stadium and Jackson
Ann Arbor, MI
(734) 741-1900**

Family Owned Since 1959
• Appliances • Home Theater • Cameras • Outdoor Living •

Big Georges

www.big-georges.com

2019 W. Stadium Blvd • Ann Arbor • 734.669.9500
Best EXPERIENCE • SERVICE • SELECTION

Ann Arbor Camera Club Events in Month:

The April 3 and 17 meetings will be held in Room 111 of Forsythe Intermediate School, 1655 Newport Road, Ann Arbor. Meetings are free and open to the public.

Tuesday, April 3, 2007, 7:30 PM

“Improving Your Pictures Through Better Composition”

Members will show traditional slides and digital images. Remember you are limited to a total of 4 exhibits

AACC member, **George Lavoie**, will present an informal sharing of thoughts and ideas about composition, with examples, historical views and practical tips. He will illustrate the talk with some famous and not so famous examples.

Tuesday, April 17, 2007, 7:30 PM

“Alternative Photographic Methods: Toy and Pinhole Cameras”

Matt Callow, Bill Bresler, and Mike Myers will discuss “Alternative Photographic Methods: Their History and Use Today”. Matt Callow is a British experimental photographer now living in Ypsilanti; Bill Bresler is a newspaper photographer who also teaches University classes. Mike Myers, has exhibited his work throughout Southeastern Michigan. He has an MFA in photography,

Following the presentation members will show prints. There is a limit of 4 which must be in place before the meeting starts.

If you have not already paid your 2007 – 2008 dues of \$15, (or decide to become a life member for \$100) please see Brad Bates or mail your check to:
P. O. Box 1182, Ann Arbor, MI 48106 right away.

Matthaei Botanical Gardens

by Camera Club Members



Gateway Garden, © JOAN LEVITT

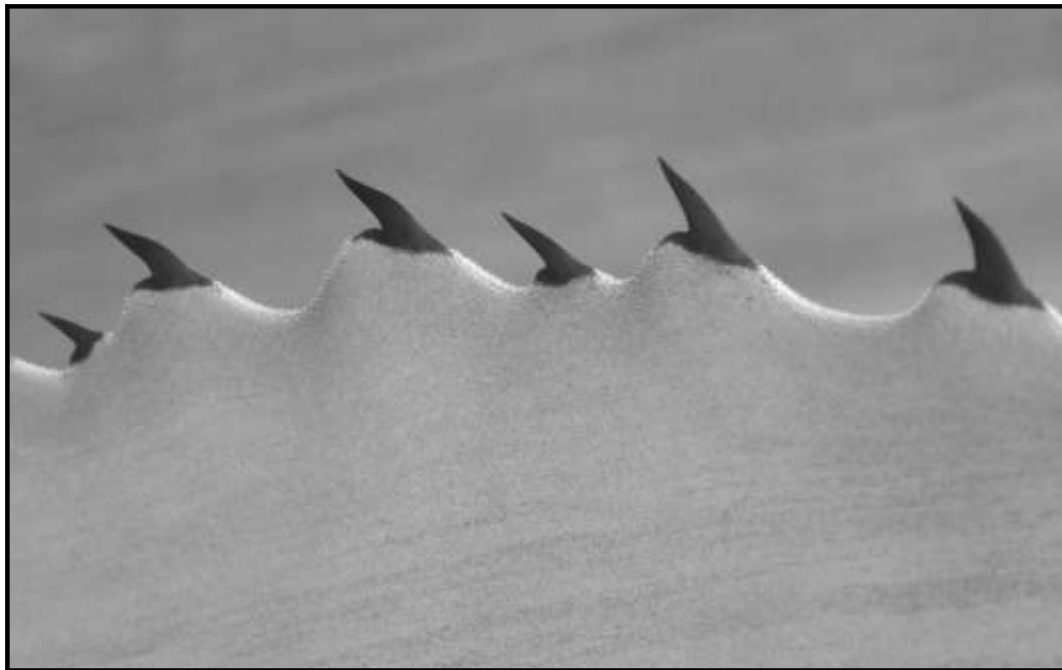


Arbor Shadows, © RICH LAWTON

Matthaei Botanical Gardens celebrate several anniversaries in 2007. One hundred ninety years ago the founders of the University of Michigan noted the desirability of a botanical gardens in the University's charter. One hundred years ago The University established the University Botanical Garden and Arboretum. Fifty years ago the University decided to move the Botanical Garden to its own site on the 200 acres donated by Frederick C. and Mildred H Matthaei. In 1967, with the Conservatory completed and more ground designated for the Gardens, the Regents renamed the Botanical Gardens to Matthaei Botanical Gardens. Today Matthaei Gardens is comprised of thirteen display gardens, four trails and four permanent collections in the conservatory.

The Gateway Garden of New World Plants (page 4 and above) presents ornamental plants originally native to South, Central or North America. These plants were unknown outside of the Americas until the voyages of European explorers. Many ornamentals must have been domesticated by native peoples throughout the Americas. The garden is comprised of both wild species and modern selections.

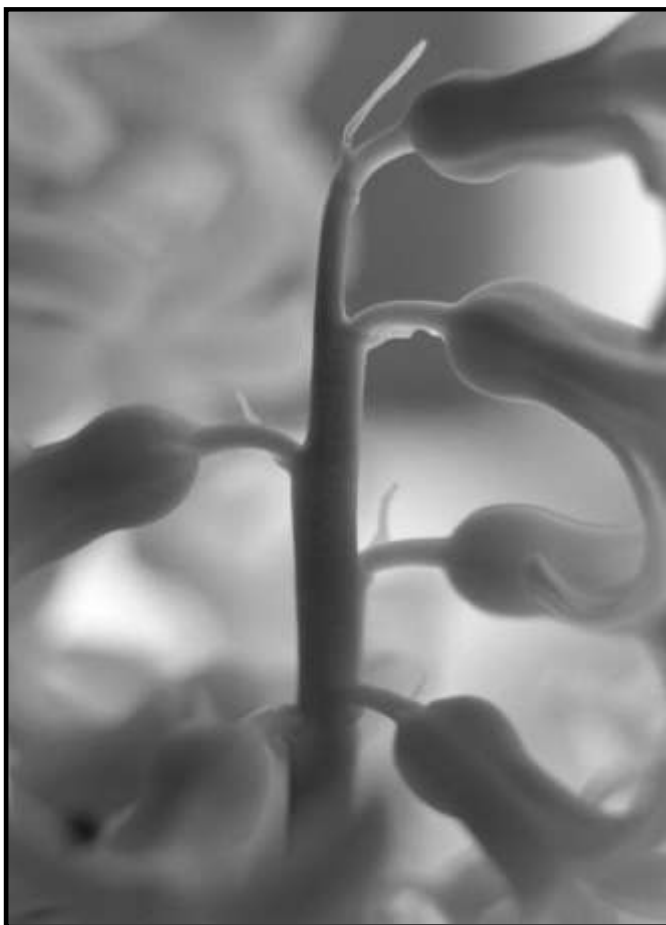
Filled with frost sensitive annuals planted in late May, this garden peaks in July and August although blooms continue into October. It's an explosion of color with glorious combinations.



Winter is a great time to visit Matthaei Gardens, outside as at left and in the Conservatory as seen below and on the cover.

Photographs of The Annual Garden and individual flowers on page 7 show some of the delights of summer at Matthaei.

Agave in Snow, © MARK AKEMANN



Flower 2, © MARC AKEMANN



Matthaeii Conservatory, © HOSAIN MOSAVAT



Rose Garden, © ANN O'HAGAN



Hidden Glory, © DAVID PATRIA



Painted Lady Butterfly on Zizia, © KEITH MATZ



Summer Annual Garden, © KEITH MATZ



Matthaei Bench, © ANN O'HAGAN

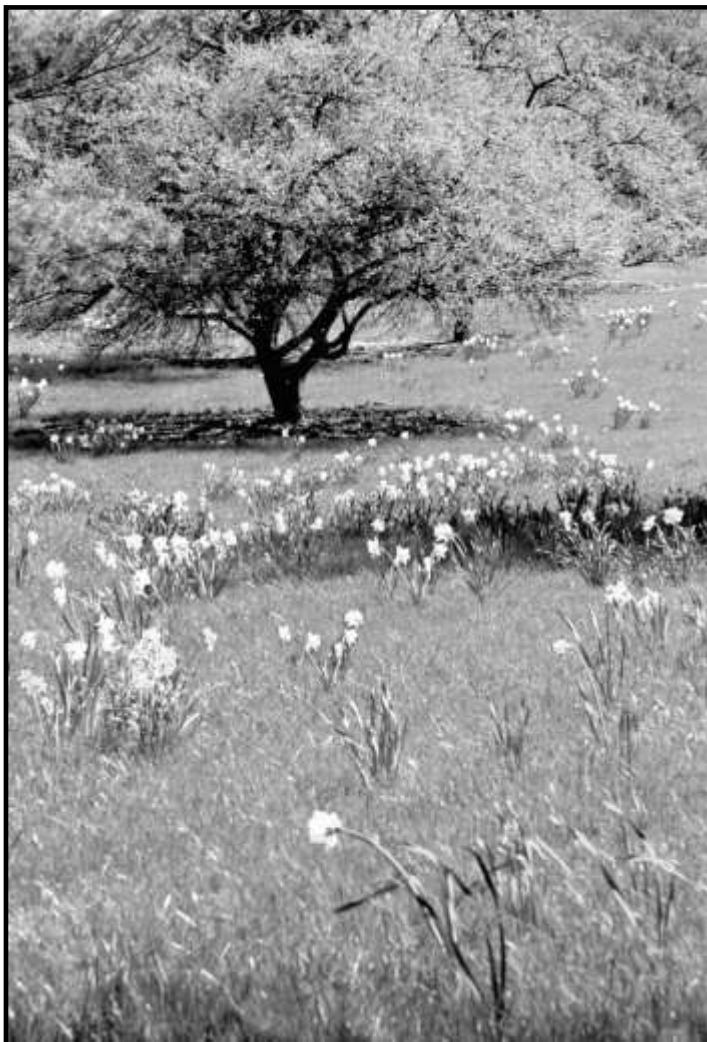


Hummingbird Moth Top View, ©MARY KIRBY

There are many tranquil places for quiet contemplation in Matthaei Gardens. Some are by the lake, or a fountain, in a carefully planned garden, or on a naturalized trail.



Fountain Close up, © JOAN LEVITT



Daffodil Field Master, © ANN O'HAGAN



Unknown Flower 1, © MARC AKEMANN



Quiet Viewing, © DAVID PATRIA



Lonesome Crossing, © DAVID PATRIA

Annual Competition Winners:

Traditional Slide Winners

Assignment:

1 st Place	The Wave	Keith Matz
2 nd Place	Belkin Castle Window	Jim Arns
3 rd Place	Bandon Beach	Bob Paup

Open:

1 st Place	Wind Mills	Bob Paup
2 nd Place	St. Andrews Window	Jim Arns
3 rd Place	Superior Water Fall	Keith Matz

Digital Image Winners

Assignment

1 st Place	Annie in the Woods	Nina Hauser
2 nd Place	Lady in the Window	Carol Williamson
3 rd Place	Resting in the Sun	David Patria

Open:

1 st Place	Last Gasp	Irwin Martin
2 nd Place	Rousson Stairway	Carol Williamson
3 rd Place	Kayaks	Irwin Martin

Print Winners

Division Amateur

Assignment

1 st Place	Geometrical Staircase	Judy Mosavat
2 nd Place	Where the Silk Road Ends	Judy Mosavat
3 rd Place	Log Cabin Window	Sandy Prochazka

Open

1 st Place	Shawna	Don Skiff
2 nd Place	Mackinac Bridge	Michael Colter
3 rd Place	Cleveland Arcade Stairway	Warren Goehring

Print Winners

Division Experienced

Assignment

1 st Place	Lighthouse in Fog	Hosain Mosavat
2 nd Place	Maryam	Hosain Mosavat
3 rd Place	Chuck's Boat	George Lavoie

Open:

1 st Place	Michigan Composite	Ann O'Hagen
2 nd Place	Dock in the Morning	Robbi Peterson
3 rd Place	Mackinac Bridge	Hosain Mosavat

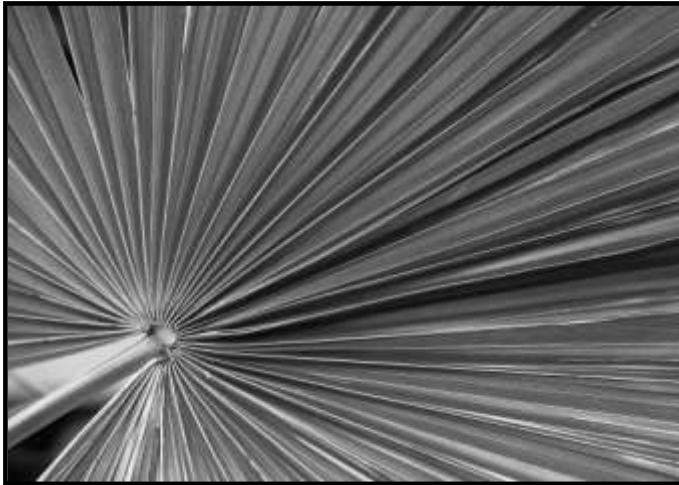
Exhibits & Events

Bob Paup's photograph, "**Smoke on the Ohio**" will appear in the juried exhibition in Gallery 2 at **The Ann Arbor Art Center, 117 West Liberty from March 29 – May 13.**

"Shooting Nature: Creative Techniques to Improve your Photography"

The McKune Memorial Library in Chelsea, Michigan is pleased to announce a photography presentation by Julia Gordon on Wednesday, April 11th 2007 at 7:00 pm. The presentation is free and open to the public, please call to register at (734) 475-8732. Location: 221 South Main, Chelsea, MI 48118. Professional photographer and instructor Julia Gordon lives in the Chelsea area and specializes in nature, wildlife and travel photography.





Palm Branch, © MARC AKEMANN



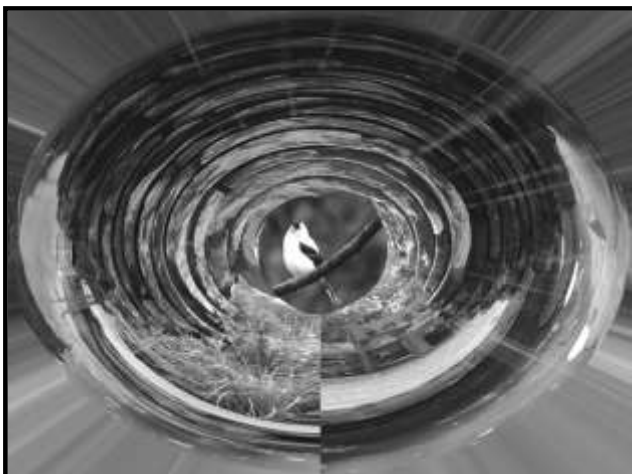
Spring Reflections, © DAVID PATRIA



Matthaei Garden Arbor, © RICH LAWTON



Matthaei Greenhouse, © HORACE BOMAR



Goldfinch as seen in a garden waterfall, © MARY KIRBY
(Using Photoshop Polar Coordinate Filter to create the "eye" in a picture of a waterfall in the gardens)

Upcoming Assignments for 2007

- April..... Reflections
- May Patterns
- June..... Urban Scenes
- September University Arboretum

ann arbor camera club

p.o. box 1182 ann arbor michigan 48106

April 2007

The Wide Angle News

Page 12

April Meeting Dates:

April 3: "Improving Your Pictures Through Composition"

Presented by George Lavoie

April 17: "Alternative Photographic Methods: Toy and Pinhole Cameras"

Presented by Matt Callow, Bill Bresler, and Mike Myers

April Assignment: Reflections

Please see page 3 for more information.

Officers for 2006-2007

President:

Rich Lawton (734) 994-3669; richy@umich.edu

Vice President:

George Lavoie (734) 663-1626;

glavoie@umich.edu

Treasurer:

Brad Bates (734) 665 4552; batesb@umich.edu

Digital Image Coordinator:

Ann O'Hagan (734) 572 5866;

annohagan@comcast.net

Publicity:

Alice Nuttall (734) 327-4781; amboise@umich.edu

Hospitality & Events:

Mary Ann Dunn (734) 662-9251;

tlcmadunn@yahoo.com

Web Site Manager:

Kathy Cooley (734) 424-0612; Omacasey@aol.com

Newsletter Editor:

Arlene Paup (734) 668-1004;

leepaup@ameritech.net

www.annarborcameraclub.org